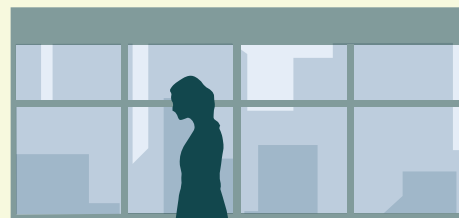




## Choose Safe Places for Early Care and Education



## Free E-Learning Opportunity (with continuing education credits) for Licensed Early Care and Education Providers

There are many things in the environment that can harm children's health. Do you know how to protect the children at your child care center?

Take a 3-hour online course to learn about environmental hazards, taking precautions at your facility, and how to make decisions that protect the children, your staff, and your business.

### About the Course

#### Eco-Healthy Child Care® - Protecting Children's Environmental Health Course

Earn 0.30 CEUs (Continuing Education Unit) and a certificate of completion

Available in English and Spanish

Flexible online format – can be paused and resumed at any time.

### What will I learn from taking the course?

This course covers a range of environmental health topics for center or home-based facilities, such as:

- Improving indoor air quality;
- Selecting safe art materials;
- Protecting children's health by choosing safe furniture, playground equipment, toys, and pest control products; and
- Reducing exposures to household chemicals and unsafe plastics.

### How do I take this course?

To access the online course:

1. Follow the link to the [Eco-Healthy Child Care - English - ProSolutions Training](#).  
To access the Spanish version: [Eco-Healthy Child Care - Spanish - ProSolutions Training](#)
2. Click the "Add to Cart" button
3. Enter the provided code **RIDOHCEHN24** in the "Promo Code" box and click "Apply"

The Rhode Island Department of Health (RIDOH) is providing a code that will waive the fee for this course. The code is provided on a first-come, first-served basis.

### What if I run a home-based facility?

Home-based child care centers can and should take this course. The information and activities are directed toward any type of child care provider.

### What is Choose Safe Places?

The RIDOH Choose Safe Places program aims to ensure that any new and existing child care centers in Rhode Island are safe for operation. Choose Safe Places educates those operating child care facilities on how they can protect children in their care and staff. The program is funded by the Agency for Toxic Substances and Disease Registry. Learn more about the program on our website: [health.ri.gov/ehrap](http://health.ri.gov/ehrap).