






LEARNING OBJECTIVES

- Understand what is meant by curriculum modification.
- Learn strategies and examples of curriculum modification.
- Explore application of curriculum modification based on individual children's needs.

CURRICULUM MODIFICATION

WHAT		WHY
	WHEN	

**WHAT
IS CURRICULUM MODIFICATION?**

“ A change to the ongoing classroom activity or materials in order to facilitate or maximize a child's participation in planned activities, interactions, and routines. ”


—Sandall, S., & Schwartz, I. (2008). Building blocks for teaching preschoolers with special needs. Baltimore: Paul H. Brookes Publishing.

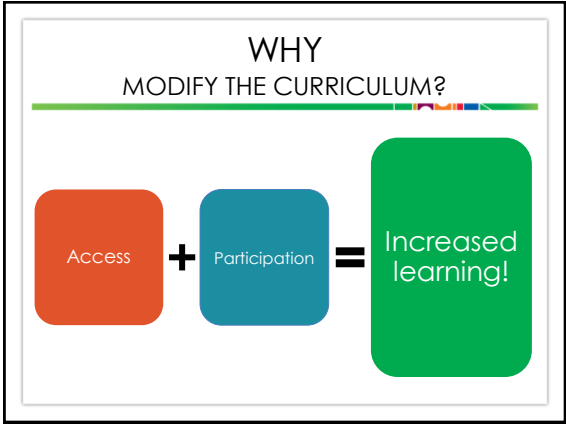
**WHAT
IS CURRICULUM MODIFICATION?**

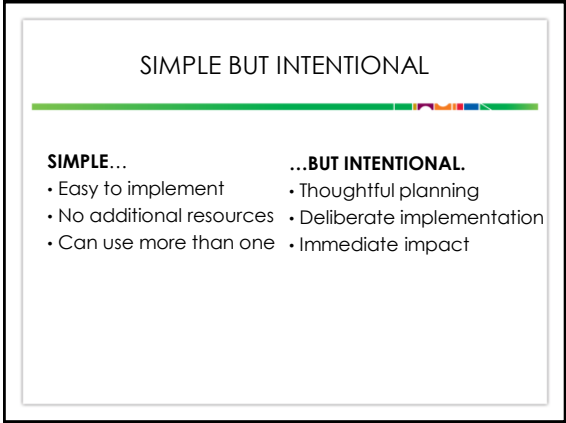
SMALL CHANGE,
BIG IMPACT

**WHEN
DO I MODIFY THE CURRICULUM?**

When a child is not fully participating in a meaningful way.









8 TYPES OF CURRICULUM MODIFICATIONS

Environmental Support	Peer Support
Child Preferences	Adult Support
Materials Adaptation	Invisible Support
Special Equipment	Simplify the Activity

8 TYPES OF CURRICULUM MODIFICATIONS

Environmental Support

ENVIRONMENTAL SUPPORT

“ Altering the physical, social, and temporal environment to promote participation, engagement, and learning. ”

—Sandall, S., & Schwartz, I. (2008). Building blocks for teaching preschoolers with special needs. Baltimore, Paul H. Brookes Publishing.

LET THE ENVIRONMENT DO THE "TALKING"

Benefits:

- Increases children's independence
- Doesn't single out a particular child
- Empowers children
- Allows teachers to be more efficient

PHYSICAL ADJUSTMENTS

Change the space.	Manage materials and supplies.
Define boundaries.	Add visual cues.

PHYSICAL ADJUSTMENTS CHANGING THE SPACE



PHYSICAL ADJUSTMENTS
CHANGING THE SPACE



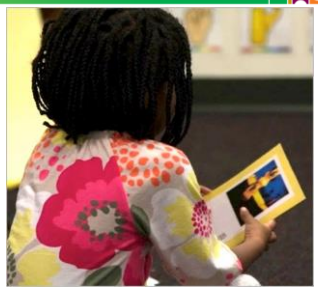
PHYSICAL ADJUSTMENTS
CHANGING THE SPACE



PHYSICAL ADJUSTMENTS
MANAGING MATERIALS



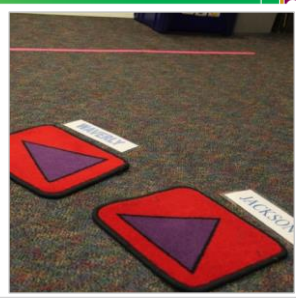
PHYSICAL ADJUSTMENTS
MANAGING MATERIALS

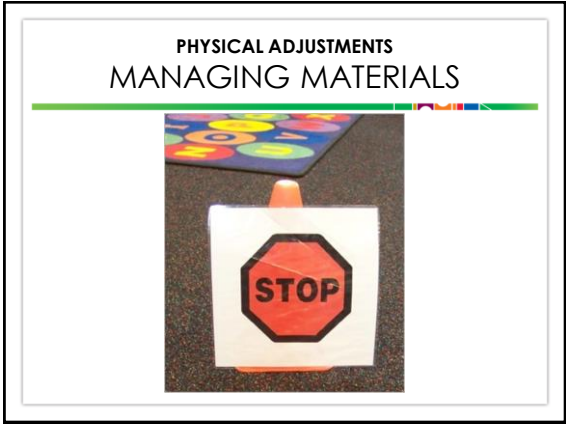


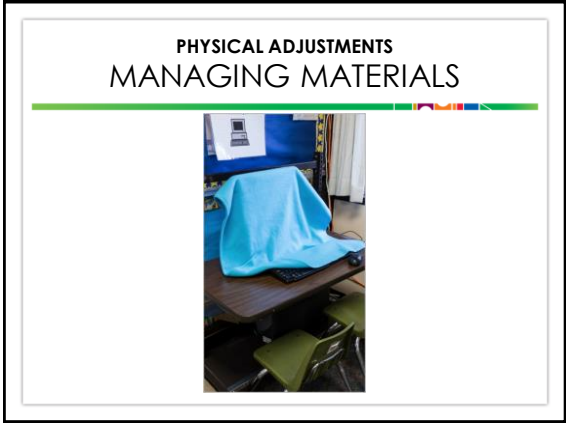
PHYSICAL ADJUSTMENTS
MANAGING MATERIALS



PHYSICAL ADJUSTMENTS
DEFINING BOUNDARIES









PHYSICAL ADJUSTMENTS
ADDING VISUALS

Visuals can be used to:

- Establish rules and routines.
- Support play.
- Help children understand and regulate their emotions.
- Enhance communication.



PHYSICAL ADJUSTMENTS
VISUALS: FOR RULES AND ROUTINES



PHYSICAL ADJUSTMENTS
VISUALS: FOR RULES AND ROUTINES



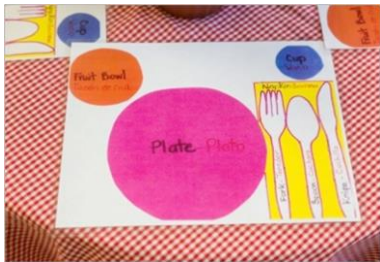
PHYSICAL ADJUSTMENTS
VISUALS: FOR RULES AND ROUTINES



PHYSICAL ADJUSTMENTS
VISUALS: TO SUPPORT PLAY



PHYSICAL ADJUSTMENTS
VISUALS: TO SUPPORT PLAY



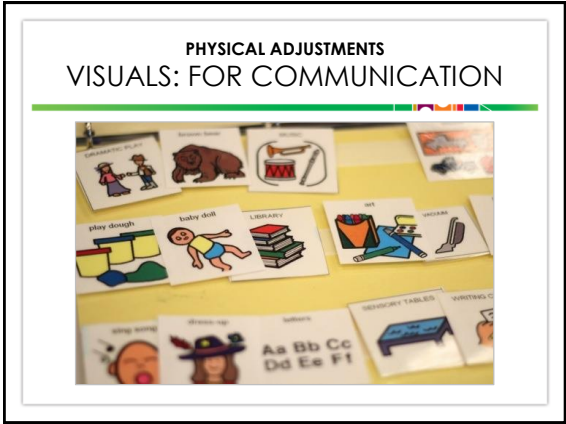


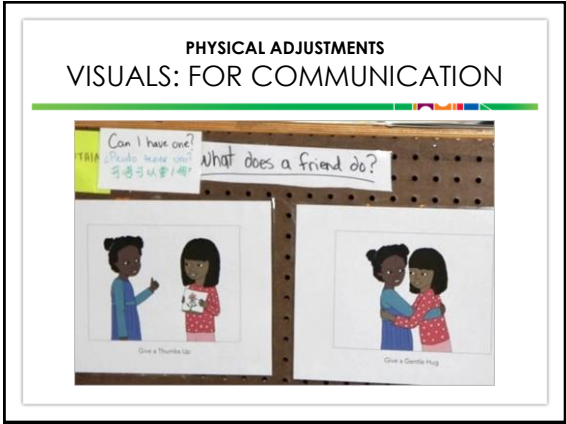


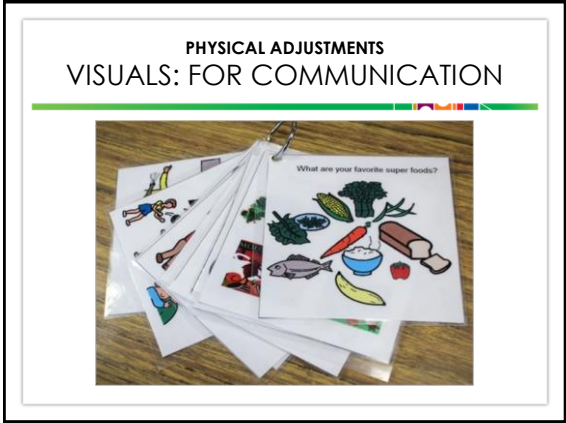












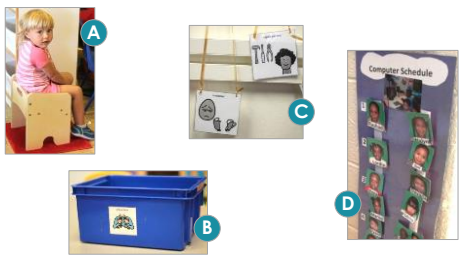


PHYSICAL ADJUSTMENTS
VISUALS: FOR DUAL LANGUAGE LEARNERS

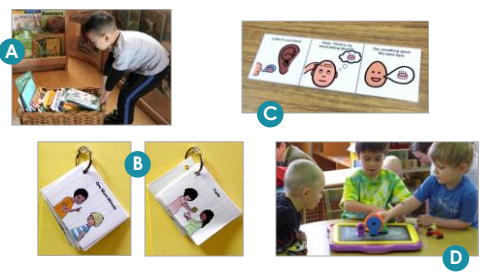
PHYSICAL ADJUSTMENTS
VISUALS: FOR DUAL LANGUAGE LEARNERS

**MODIFICATION MATCH:
LEARNING ACTIVITY**

MODIFICATION MATCH: PART 1



MODIFICATION MATCH: PART 2



REVIEW

You learned:

- What curriculum modification means
- 8 general types of curriculum modification
- Focus on environmental support modifications, including:
 - Physical adjustments
 - Visual supports



**CENTER FOR
EARLY LEARNING
PROFESSIONALS**
Professional Development • Technical Assistance • Research

For more information, contact us at
info@center-elp.org or 401-736-9020.
www.center-elp.org



U.S. DEPARTMENT OF HEALTH AND HUMAN SERVICES
OFFICE OF EARLY CHILDHOOD DEVELOPMENT

**THE NATIONAL CENTER ON
Quality Teaching
and Learning**



NCQTL
NATIONAL CENTER ON QUALITY TEACHING AND LEARNING

This document was prepared under Grant #99HC002 for the U.S. Department of Health and Human Services, Administration for Children and Families, Office of Head Start, by the National Center on Quality Teaching and Learning. WINTER 2014
